

## ENGINEERED SLEEVE SOLUTIONS

**Wellvene extend range of Tubing Hanger, DHSV and SSD Isolation and Hold Open Protection Sleeves.**

Wellvene launch full range of Tubing Hanger, DHSV and SSD Isolation and Hold Open Protection Sleeves.

Our sleeve range can be deployed and set on Drill Pipe, Slickline, Coil Tubing or Electric-Line, ensuring we can supply a sleeve solution to support your operational requirements.

Available from stock to suit the most common OEM nipple profile size and types, our sleeves can be supplied with standard or large bore ID's specific to your wellbore nipple profile and operational pressure requirements.

For more info on each of the sleeves offered by Wellvene, including our P&A sleeve offerings, please refer to the attached Product Overview Document or check out our website [www.wellvene.com](http://www.wellvene.com)

For more complex operations that require a non-standard sleeve, Wellvene can design, manufacture and supply within the shortest of lead times to support your planned intervention.

**OUR AIM IS TO ENSURE WE ARE POSITIONED TO OFFER OUR CUSTOMERS A SLEEVE SOLUTION TO SUPPORT ALL INTERVENTION REQUIREMENTS.**



### CASE STUDY NO 1

## WELLVENE DESIGN, MANUFACTURE AND QUALIFY SMALL BORE ISOLATION PLUG TO V0 Q1 IN ACCORDANCE WITH ISO 14310: 2008

- Background - A Annulus pressurised during Gas Lift operations resulted in single barrier at Wellhead fitting.
- Challenge - Design a surface installed Small Bore Isolation Plug for installation and test within casing head assembly (110mm L x 17mm OD).
- Solution - Wellvene Designed, Manufactured and Qualified Small Bore Isolation Plug to V0 Q1 in accordance with BS EN ISO 14310: 2008

Following on from successful qualification and installation. Wellvene requested to design and manufacture a diver friendly Subsea version.



**WELLVENE**  
ENGINEERED WELL SOLUTIONS

↓

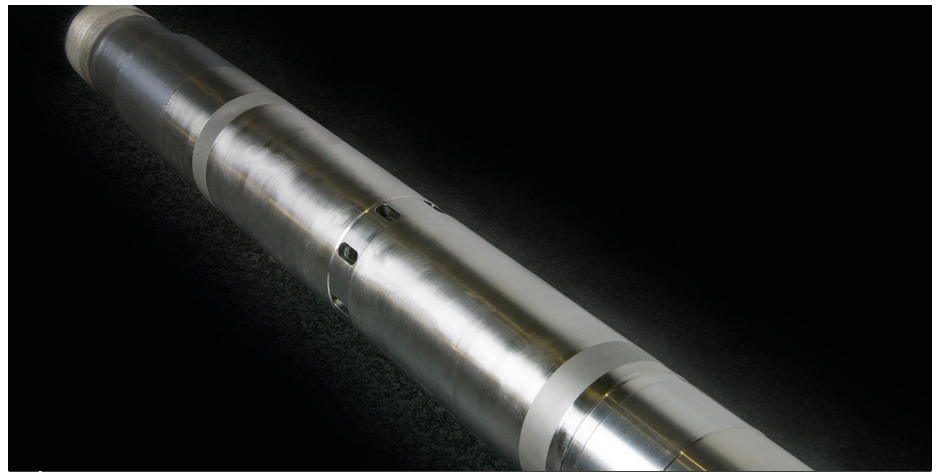
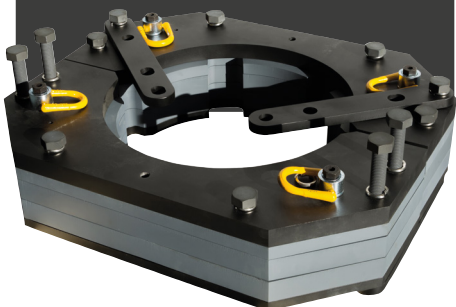
## CASE STUDY NO 2 WELLVENE DESIGN STACKABLE CONDUCTOR CLAMP ARRANGEMENT TO SUPPORT PLATFORM P&A OPERATIONS

During the planning phase of a multi well P&A campaign on a North Sea Platform, Operator identified concerns around the condition and integrity of their casing string.

The risk associated with adding additional load to the wellhead and casing string through installation of heavy weight drilling and intervention equipment was deemed too high.

As such, Wellvene were tasked with the design and manufacture of a stackable clamp arrangement that could be re-configured for varied gap sizes between the top of conductor and bottom of wellhead whilst ensuring all loads remained transferred to the conductor.

*In ageing wells with uncertainty around the condition and integrity of casing strings, a requirement has been identified to consider the installation of a wellhead support clamp to minimise potential buckling through increased load and stress. With the increasing volume of P&A operations, additional loads are being applied to casing strings and wellheads with the installation of heavy weight drilling and intervention equipment. To support the casing string and distribute the loads onto the conductor, Wellvene offer a bespoke conductor clamp arrangement designed and manufactured specific to the selected wellhead configuration.*



↓

## CASE STUDY NO 3 VØ Q1 MECHANICAL CIRCULATING SIDE DOOR

→ Background - As part of workover operations on a subsea well, coil tubing was required for N2 underbalance due to depleted reservoir. An option to utilise a hydrostatically closed circulating side door was ruled out due to the completion incorporating a hydraulically set production packer. Customer identified opportunity to circulate N2 through mechanically operated side door, which in turn eliminated the requirement for coil tubing operations.

→ Challenge - To meet operational start date, Wellvene challenged with the Design, Manufacture and Qualification of metal to metal sealing Mechanical Circulating Side Door and all associated Intervention Tooling within 12-week lead time.

→ Solution - Mechanical Circulating Side Door Designed, Manufactured and Qualified to VØ Q1 in accordance with BS EN ISO 14998: 2013

## ISO ACCREDITATION

Wellvene recently awarded the **ISO 9001:2015 Certificate of Registration** for our Quality Management System.



## GET IN TOUCH

Call us on **+44 (0)1224 502200** or **+44 (0)7540 554568**, a member of staff is always on hand to take your call during working hours and will promptly get back to messages left on the answer machine out of hours.

Or alternately email us at **info@wellvene.com**

## FIND US

Unit 4 Howe Moss Avenue,  
Kirkhill Industrial Estate,  
Dyce, Aberdeen, AB21 0GP  
**wellvene.com**